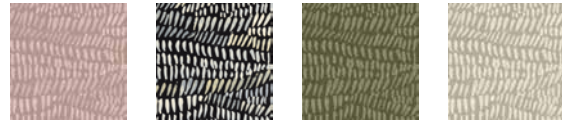


# Up The Wall - Blush

SKU WCM104-BH  
 Collection The Mural Collection  
 Mural Size 14 ft. W x 10 ft. H  
 Repeatable Yes (14 ft.)



WCM104-BH    WCM104-IN    WCM104-OL    WCM104-PA

## WALLPAPER SPECIFICATIONS

|                | PREMIUM PAPER (TRADITIONAL)  | TYPE II VINYL                                       | TYPE II PVC-FREE  |
|----------------|--|---|---|
| ROLL WIDTH     | 24 in.   | 48 in.  | 24 in. or 48 in.  |
| ROLL LENGTH    | 10 ft. or Custom Length  | By the Yard   | 10 ft. or By the Yard   |
| WEIGHT         | 9 mil.   | 20 oz.  | 18 oz.  |
| FINISH         | Double-cut or Overlay  | Double-cut  | Double-cut  |
| FIRE RATING    | ASTM E84 Class 1 or Class "A"  | ASTM E84 Class 1 or Class "A"                       | ASTM E84 Class 1 or Class "A"   |
| USAGE          | Residential & Commercial   | Residential & Commercial                            | Residential & Commercial  |
| CLEANABILITY   | Spongeable   | Scrubable   | Scrubable   |
| SUSTAINABILITY | 100% Non-Toxic   | Low VOC Emissions                                   | 100% Non-Toxic  |
| PAPER QUALITY  | Smooth paste-the-wall PVC-Free non-woven material with a washable and non-reflective top coat. | Highly durable textured Type II certified material. | Highly durable Type II certified material. Available in Canvas or Faux Grasscloth textures. |

## ORDER PREPARATION

- Our wallpapers are designed, manufactured, and fulfilled on demand with love in Chicago, IL.
- Each wallpaper order is custom printed for color consistency. Please calculate the total number of rolls needed for a single pattern before placing your order. Future orders of the same item may vary slightly in color.

## SUSTAINABILITY

- We minimize waste by custom printing all of our orders, meaning we carry zero inventory.
- We print our wallpaper using eco-friendly, GREENGUARD Gold Certified inks that produce zero VOCs, zero hazardous air pollutants, and are odorless.
- Our energy-efficient LED curing process uses up to 40% less ink compared to traditional latex or eco-solvent inks.
- Mitchell Black's wallpapers are of the highest quality.

☎ 312-677-4477  
 ✉ sales@mitchellblackhome.com

**MITCHELL BLACK™**

📷 mitchell\_black  
 ❤️ Woman and Minority Owned