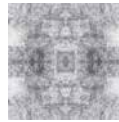


Deep Field

SKU WCAB430
 Collection Abra I
 Repeat 24 in.
 Match Straight Match



WCAB430

WALLPAPER SPECIFICATIONS

| | PREMIUM PAPER (TRADITIONAL) | TYPE II VINYL | TYPE II PVC-FREE |
|----------------|--|---|---|
| ROLL WIDTH | 24 in. | 48 in. | 24 in. or 48 in. |
| ROLL LENGTH | 10 ft. or Custom Length | By the Yard | 10 ft. or By the Yard |
| WEIGHT | 9 mil. | 20 oz. | 18 oz. |
| FINISH | Double-cut or Overlay | Double-cut | Double-cut |
| FIRE RATING | ASTM E84 Class 1 or Class "A" | ASTM E84 Class 1 or Class "A" | ASTM E84 Class 1 or Class "A" |
| USAGE | Residential & Commercial | Residential & Commercial | Residential & Commercial |
| CLEANABILITY | Spongeable | Scrubbable | Scrubbable |
| SUSTAINABILITY | 100% Non-Toxic | Low VOC Emissions | 100% Non-Toxic |
| PAPER QUALITY | Smooth paste-the-wall PVC-Free non-woven material with a washable and non-reflective top coat. | Highly durable textured Type II certified material. | Highly durable Type II certified material. Available in Canvas or Faux Grasscloth textures. |

ORDER PREPARATION

- Our wallpapers are designed, manufactured, and fulfilled on demand with love in Chicago, IL.
- Each wallpaper order is custom printed for color consistency. Please calculate the total number of rolls needed for a single pattern before placing your order. Future orders of the same item may vary slightly in color.

SUSTAINABILITY

- We minimize waste by custom printing all of our orders, meaning we carry zero inventory.
- We print our wallpaper using eco-friendly, GREENGUARD Gold Certified inks that produce zero VOCs, zero hazardous air pollutants, and are odorless.
- Our energy-efficient LED curing process uses up to 40% less ink compared to traditional latex or eco-solvent inks.
- Mitchell Black's wallpapers are of the highest quality.

☎ 312-677-4477
 ✉ sales@mitchellblackhome.com

MITCHELL BLACK™

📷 mitchell_black
 ❤️ Woman and Minority Owned