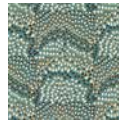


Jandaya - Blue Stone

SKU WC417-BL
 Collection Revel
 Repeat 18.75 in.
 Match Straight Match



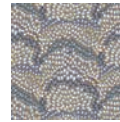
WC417-BL



WC417-B5



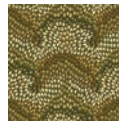
WC417-HD



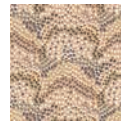
WC417-HE



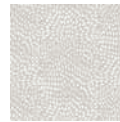
WC417-MT



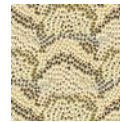
WC417-OL



WC417-PB



WC417-PG



WC417-SE

WALLPAPER SPECIFICATIONS

	PREMIUM PAPER (TRADITIONAL)	TYPE II VINYL	TYPE II PVC-FREE
ROLL WIDTH	24 in.	48 in.	24 in. or 48 in.
ROLL LENGTH	10 ft. or Custom Length	By the Yard	10 ft. or By the Yard
WEIGHT	9 mil.	20 oz.	18 oz.
FINISH	Double-cut or Overlay	Double-cut	Double-cut
FIRE RATING	ASTM E84 Class 1 or Class "A"	ASTM E84 Class 1 or Class "A"	ASTM E84 Class 1 or Class "A"
USAGE	Residential & Commercial	Residential & Commercial	Residential & Commercial
CLEANABILITY	Spongeable	Scrubable	Scrubable
SUSTAINABILITY	100% Non-Toxic	Low VOC Emissions	100% Non-Toxic
PAPER QUALITY	Smooth paste-the-wall PVC-Free non-woven material with a washable and non-reflective top coat.	Highly durable textured Type II certified material.	Highly durable Type II certified material. Available in Canvas or Faux Grasscloth textures.

ORDER PREPARATION

- Our wallpapers are designed, manufactured, and fulfilled on demand with love in Chicago, IL.
- Each wallpaper order is custom printed for color consistency. Please calculate the total number of rolls needed for a single pattern before placing your order. Future orders of the same item may vary slightly in color.

SUSTAINABILITY

- We minimize waste by custom printing all of our orders, meaning we carry zero inventory.
- We print our wallpaper using eco-friendly, GREENGUARD Gold Certified inks that produce zero VOCs, zero hazardous air pollutants, and are odorless.
- Our energy-efficient LED curing process uses up to 40% less ink compared to traditional latex or eco-solvent inks.
- Mitchell Black's wallpapers are of the highest quality.

☎ 312-677-4477
 ✉ sales@mitchellblackhome.com

MITCHELL BLACK™

📍 mitchell_black
 ❤️ Woman and Minority Owned