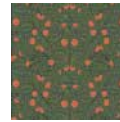


# Orange Bush - Blue Cream

SKU WC321-3  
 Collection Signature  
 Repeat 12.6 in.  
 Match Straight Match



WC321-1



WC321-2



WC321-3

## WALLPAPER SPECIFICATIONS

	PREMIUM PAPER (TRADITIONAL)	TYPE II VINYL	TYPE II PVC-FREE
ROLL WIDTH	24 in.	48 in.	24 in. or 48 in.
ROLL LENGTH	10 ft. or Custom Length	By the Yard	10 ft. or By the Yard
WEIGHT	9 mil.	20 oz.	18 oz.
FINISH	Double-cut or Overlay	Double-cut	Double-cut
FIRE RATING	ASTM E84 Class 1 or Class "A"	ASTM E84 Class 1 or Class "A"	ASTM E84 Class 1 or Class "A"
USAGE	Residential & Commercial	Residential & Commercial	Residential & Commercial
CLEANABILITY	Spongeable	Scrubable	Scrubable
SUSTAINABILITY	100% Non-Toxic	Low VOC Emissions	100% Non-Toxic
PAPER QUALITY	Smooth paste-the-wall PVC-Free non-woven material with a washable and non-reflective top coat.	Highly durable textured Type II certified material.	Highly durable Type II certified material. Available in Canvas or Faux Grasscloth textures.

## ORDER PREPARATION

- Our wallpapers are designed, manufactured, and fulfilled on demand with love in Chicago, IL.
- Each wallpaper order is custom printed for color consistency. Please calculate the total number of rolls needed for a single pattern before placing your order. Future orders of the same item may vary slightly in color.

## SUSTAINABILITY

- We minimize waste by custom printing all of our orders, meaning we carry zero inventory.
- We print our wallpaper using eco-friendly, GREENGUARD Gold Certified inks that produce zero VOCs, zero hazardous air pollutants, and are odorless.
- Our energy-efficient LED curing process uses up to 40% less ink compared to traditional latex or eco-solvent inks.
- Mitchell Black's wallpapers are of the highest quality.

☎ 312-677-4477  
 ✉ sales@mitchellblackhome.com

**MITCHELL BLACK™**

📷 mitchell\_black  
 ❤️ Woman and Minority Owned